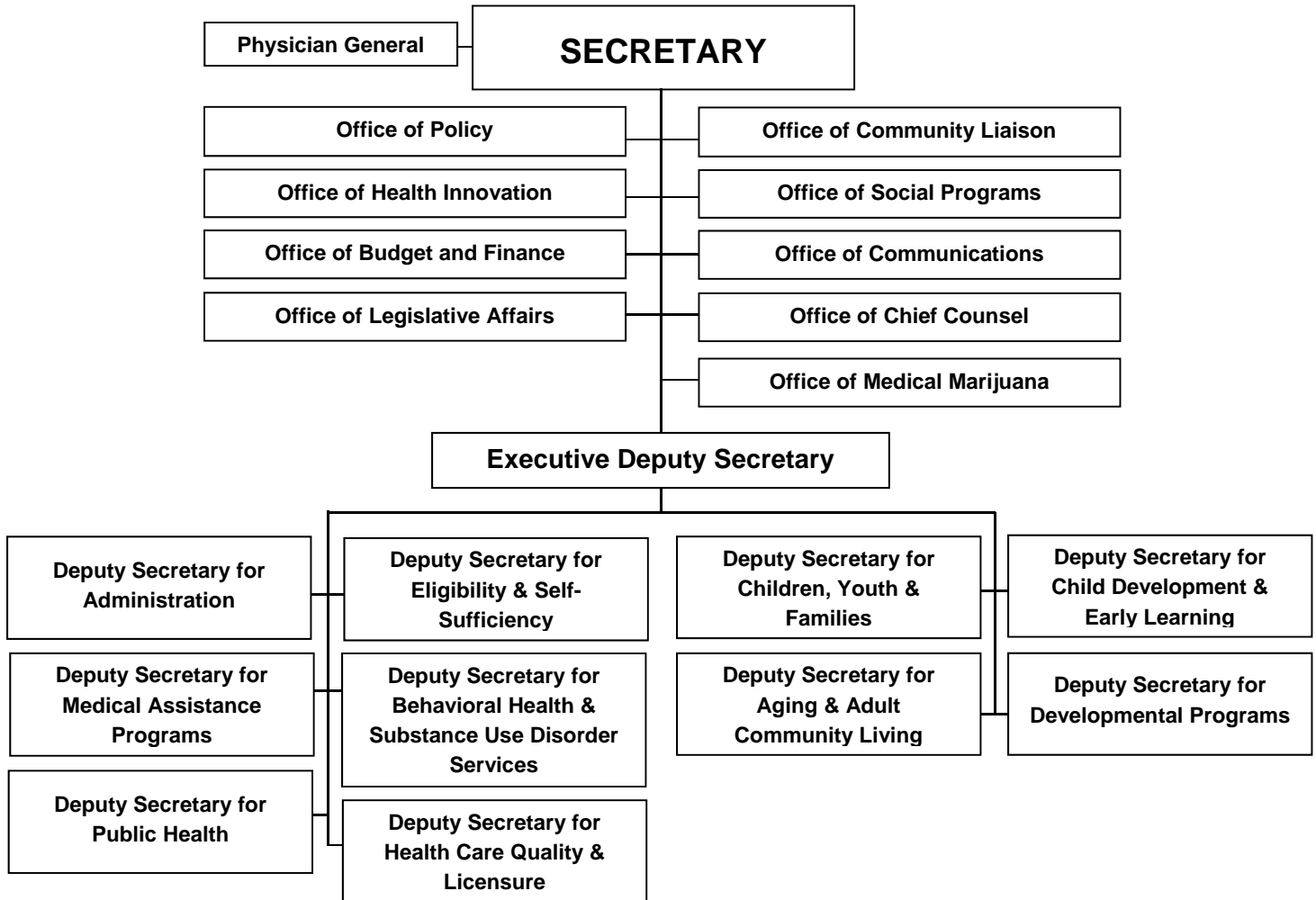


## Organization Overview

The 2017-18 Budget proposes the consolidation of the Departments of Human Services, Health, Drug and Alcohol Programs and Aging into a new Department of Health and Human Services to encourage more effective collaboration and service delivery, enhance program effectiveness, reduce administrative costs, and eliminate duplicate positions.



- **Deputy Secretary for Administration** oversees the bureaus of Health Statistics and Registries; Human Resources; Financial Operations; Information Systems; Administrative Services; Hearings and Appeals; and Equal Opportunity.
- **Deputy Secretary for Eligibility and Self-Sufficiency** is responsible for the oversight of the Temporary Assistance for Needy Families program; Medical Assistance; Supplemental Nutrition Assistance Program; Women, Infants and Children program; home heating assistance; family assistance; health services; employment and training services; and child support.
- **Deputy Secretary for Children, Youth and Families** oversees the bureaus of Policy, Programs and Operations; Children and Family Services; Juvenile Justice Services; and Budget and Fiscal Support.
- **Deputy Secretary for Child Development and Early Learning** oversees the bureaus of Subsidized Child Care Services; Certification Services; Early Learning Services; and Early Intervention Services.

## Organization Overview Continued

- **Deputy Secretary for Medical Assistance Programs** administers the joint state/federal Medical Assistance (also known as Medicaid) program that purchases health care for nearly 2.5 million Pennsylvania residents; and oversees the bureaus of Pharmacy including the Pharmaceutical Assistance Contract for the Elderly program; and Children's Health Insurance Program.
- **Deputy Secretary for Behavioral Health and Substance Use Disorder Services** oversees the Office of the Medical Director and the bureaus of Community and Hospital Operations; Policy, Planning and Program Development; Financial Management and Administration; Children's Behavioral Health; and Quality Management and Data Review.
- **Deputy Secretary for Aging and Adult Community Living** oversees the bureaus of Coordinated and Integrated Services; Provider and Participant Supports; Quality Assurance and Program Analytics; Policy Development and Communications Management; and Finance.
- **Deputy Secretary for Developmental Programs** oversees the bureaus of Financial Management and Budget; Supports for People with Intellectual Disabilities; Policy and Program Support; and Autism Services.
- **Deputy Secretary for Public Health** oversees the bureaus of Health Planning; Public and Emergency Preparedness; Community Health Systems; Health Promotion and Risk Reduction; Family Health; Laboratory and Epidemiology Services; and Communicable Diseases.
- **Deputy Secretary for Health Care Quality and Licensure** oversees the bureaus of Licensure and Certification; Community Program Licensure and Certification; Managed Care; and Program Integrity.

### Authorized Complement

2011-12 Actual	2012-13 Actual	2013-14 Actual	2014-15 Actual	2015-16 Actual*
18,640	18,467	18,236	18,535	18,683

\* Authorized complement includes Children's Health Insurance Program positions transferred from the Insurance Department effective July 1, 2015.